

ENTRANCE DOOR IMPRESSIONS 2014

COMTÜR  
EXCLUSIVE DOORS

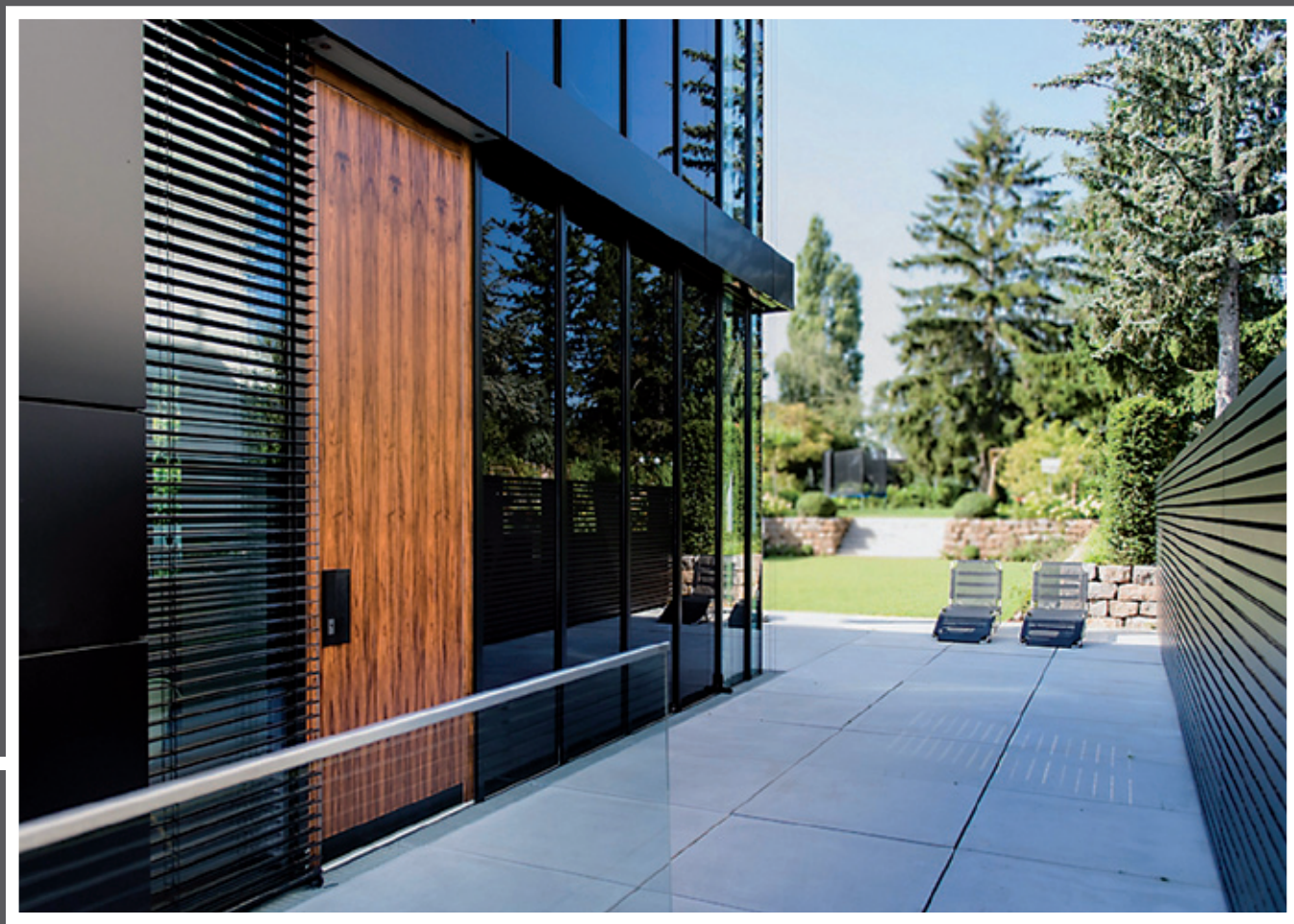


Openings in outer walls decisively determine the appearance and the use of buildings. Our entrance doors can have many designer accents that allow for varied scenarios. Doors can define the demarcation of rooms and provide security, warmth and weather proofing. In addition, they can take on different forms by using a variety of colors and fascinating materials. We have captured these impressions for you.

Be surprised and inspired by the impressions of the following entrance doors!

Model PLATIN with design veneer Stratos Sapelli-Mocca and stainless steel inserts.

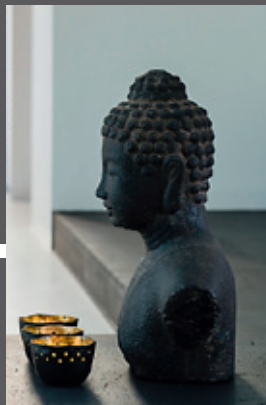
**COMTÜR**  
EXCLUSIVE DOORS





## PLACE ACCENTS.

The design is accented by clean lines and high quality expressive materials. This three meter high entrance door was integrated as a wall-designing element into the facade of the modern residential project in Stuttgart. Especially impressive is the Cocobolo surface of the flush hung model BASIC 1001.



**COMTÜR**  
EXCLUSIVE DOORS







## PURE DESIGN.

The double door element BASIC 1000 impresses by its straightness. The concealed hinges, the integrated concealed door closing system and the black-grey surface complement the unusual architecture of the house. A special point of interest is the square designer handle.



**COMTÜR**  
EXCLUSIVE DOORS







NATURAL. SIMPLE. BEAUTIFUL.

Modern architecture combined with the naturally grown material wood. This illustrates a project in Schwetzingen with the flush hung entrance door element BASIC 1000. The simple veneer, European oak, was stained and restored according to the customer's specifications.



**COMTÜR**  
EXCLUSIVE DOORS





## SIMPLY EXCEPTIONAL.

The umber grey entrance door BASIC 1000 is convincing by its details. The custom made recessed handle was specifically designed and shaped to add optical value. The internal alarm is hidden in the insulated glass sidelights.



**COMTÜR**  
EXCLUSIVE DOORS





## MATERIAL AND DESIGN.

The highlight of the expansive glass front entrance is the designer veneer Ebenholz-Maró featured on the simple entrance door model BASIC 1001. The line design of the façade is found repeated through the push handle, safety rosette and interior door handle accessories.



**COMTÜR**  
EXCLUSIVE DOORS







## HARMONIOUS UNITY.

Entrance doors by ComTür form a harmonious and perfect unity of design, innovative technology and high security standards. The entrance door model DECO 1301-A is equipped with a fingerprint security system on the door leaf. Many combinations are possible from Bluetooth technology to automatic openers.



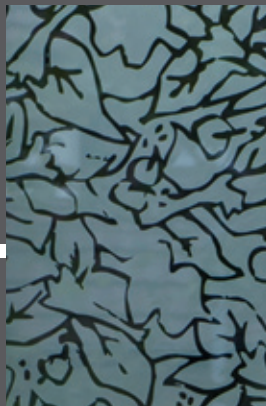
**COMTÜR**  
EXCLUSIVE DOORS





## GLASS AND WOOD.

The extravagant glass glazing is what makes this eye-catching designer villa. The entrance door design is kept simple. The pure-white model BASIC 1000 is impressive with its 5-point safety lock with fingerprint security system and concealed door closer.



**COMTÜR**  
EXCLUSIVE DOORS





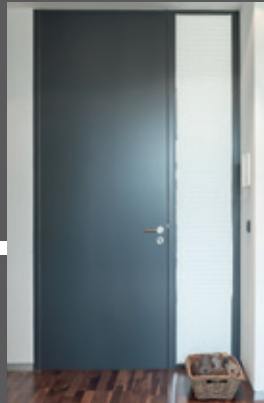




## THE ENTRANCE DOOR WITH ORIGINALITY

With the aim of creating a weatherproof, secure and design flexible entrance door, ComTür developed the model CERA. This patented entrance door collection has a ceramic surface on the outside. The Duotherm core technology creates a two leaf system that allows the door to have independent designs on the inside and outside.

CERADUR – Light colored Cement with dark Hemlock custom cup pull



**COMTÜR**  
EXCLUSIVE DOORS



CERADUR  
Moor oak wood



CERADUR  
Hemlock grey with Anthracite



CERADUR  
Jura brown concrete



SECURE. STRONG. DESIGN FLEXIBILITY.

CERA stands for the ability to have a diverse and flexible range of surface designs. Whether concrete, wood, or stone everything is possible. In addition, the ceramic deck is absolutely strong, secure and highly scratch-resistant. Combined with the Thermo-Passive door system it offers the highest burglary protection resistance class RC3.

CERADUR – Dark Hemlock with stainless steel inserts

CERADUR – Oak natured timber



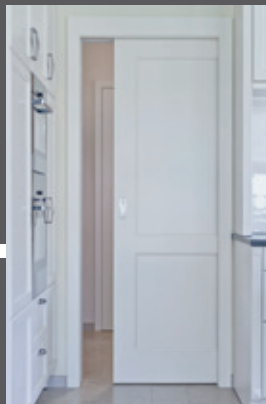
**COMTÜR**  
EXCLUSIVE DOORS





## CLEAR DESIGN IN MEDITERRANEAN STYLE.

The special characteristics of the entrance door system ANTIK are the deep-set panels with the precisepanel and raised profile F54. The interior doors of the villa, are from the VIENNA Collection. The VIENNA-TA28 model complements the elegant and classic ambience.



**COMTÜR**  
EXCLUSIVE DOORS







## AESTHETICS WITH ENDURING VALUES.

For the developers of this exclusive residential house it was an absolute requirement to design the exterior entrance door as well as all interior doors consistent in an old-German character. The large walnut double entrance door ANTIK was created to match the interior door collection VIENNA.

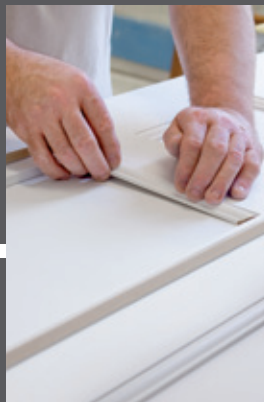


**COMTÜR**  
EXCLUSIVE DOORS





CRAFTSMANSHIP AND TRADITION DRIVEN BY PASSION.  
The successful history of the ComTür Weimann GmbH began with the manufacturing of curved elements in 1960. Today, as we did in 1960, we guarantee the highest quality down to the finest detail as the segmented curved element ANTIK demonstrates by the raised panels and luxurious panel profiles.



**COMTÜR**  
EXCLUSIVE DOORS



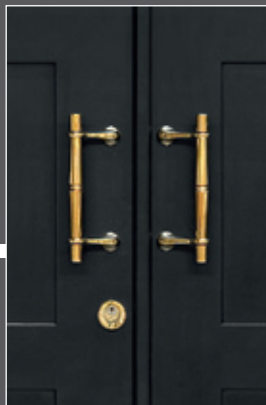






NO LIMITS. PERFECT DESIGN FLEXIBILITY.

The model DIAMOND was designed and created in full co-operation with the client. The connection of golden-colored applications on the deep black door leaf sets the accent on design. On the inside MARBELLA-GOLD is impressive and extravagantly coordinates all the details together.



**COMTÜR**  
EXCLUSIVE DOORS



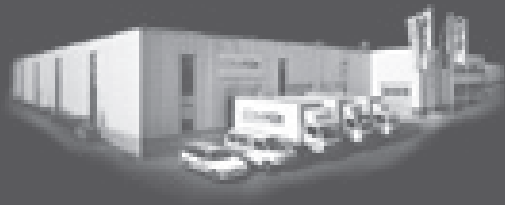


## TRADITION MEETS INNOVATION.

The entrance door collection TROJA combines the traditional material copper with innovative door technology. Copper is a natural product and allows an absolutely strong, corrosion-resistant and weatherproof surface. The designs are produced individually by customer specification.



**COMTÜR**  
EXCLUSIVE DOORS



ComTür Weimann GmbH Wannenäckerstr. 73 D-74078 Heilbronn +49(0)7131.2622-0 [www.comtuer.com](http://www.comtuer.com)